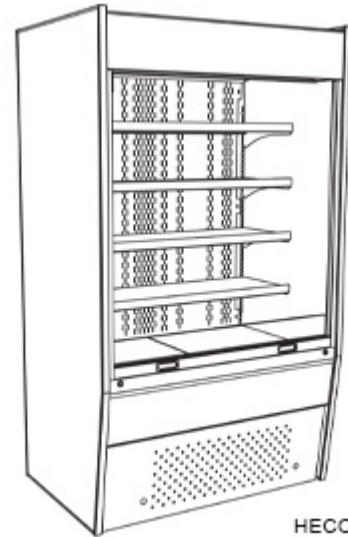


Oasis

High Environment Refrigerated Self-Service Case
40°F Product In Environments Up To 85°F/60% RH

Structural Concepts®

- HECO37R 36-1/2"L x 33-1/4"D x 82-1/8"H
- HECO47R 47-1/2"L x 33-1/4"D x 82-1/8"H
- HECO57R 59-1/2"L x 33-1/4"D x 82-1/8"H
- HECO67R 71-1/2"L x 33-1/4"D x 82-1/8"H



HECO047R

Included

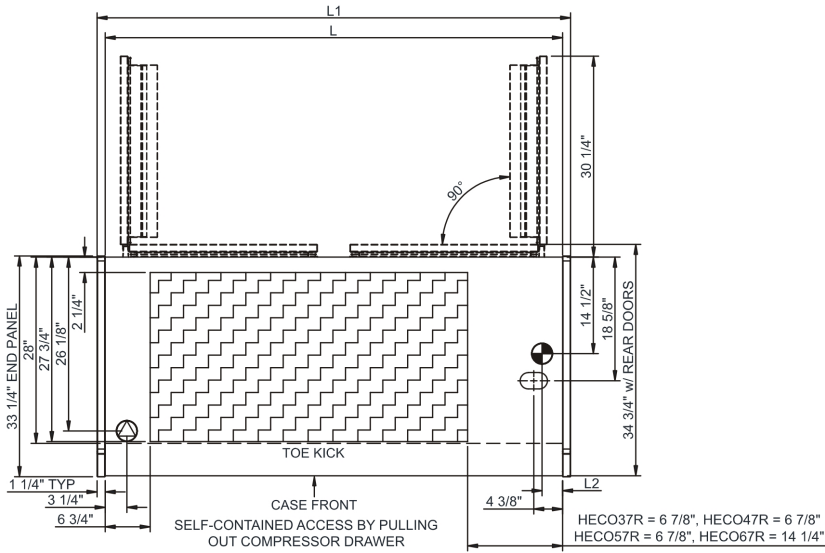
- Breeze~E (Type-II) w/ EnergyWise s/c refrigeration
- 4"D removable rear wall spacer (not included in depth dimension)
- Compressor air front intake, rear discharge. Front panel cannot be blocked.
Must remain 4" from wall
- Condensate pan (self-contained refrig. only)
- E-Coated evaporator coil
- Environmental door system w/ Roll-down security cover, locking
- Integrated average product temperature of 40°F or less
- LED 3500K top light(s)
- One piece formed ABS plastic tub
- One year parts & labor; 5 year compressor warranty
- Shelving removable and adjustable on 1" centers

Specify	Standard Features	Additional Options
EXTERIOR COLOR	• Laminated (non-premium) Confirm pattern/grain direction	• Laminated (premium) Confirm pattern/grain direction • Stainless steel (includes lower front panel)
INTERIOR COLOR	• Black	• Stainless steel
LWR PERFORATED FRNT PANEL	• Painted - Black	• Stainless steel (w/stainless ext. only)
BASE	• Casters w/ levelers	• Levelers (only) • Seismic levelers
END PANEL LEFT	• Full end panel w/mirror interior (metal edge matches interior color)	• Cutaway end panel (metal edge matches interior color)
END PANEL RIGHT	• Full end panel w/mirror interior (metal edge matches interior color)	• Cutaway end panel (metal edge matches interior color)
EXTERIOR BACK PANEL	• Solid back panel, black	1. • Rear loading hinged doors, locking • Solid back panel, stainless steel
SHELVING	• Metal shelves, non-lighted	• Metal shelves, lighted (LED 3500K)
ELECTRICAL CONNECT	• 6' Straight blade power cord (base exit)	• 6' Locking blade power cord (base exit) • 6' Locking blade power cord (top exit) • 6' Straight blade power cord (top exit)
REFRIGERATION	• Breeze~E (Type-II) w/ EnergyWise s/c refrigeration	
MISCELLANEOUS		• Case height wall spacer bracket (specify BL or SS) • Remote monitoring package (n/a w/remote ref.) • Second year parts & labor warranty (excludes compressor)
ACCESSORIES		• Clean Sweep® coil cleaner (n/a w/remote) • Price tag molding (matches interior color)

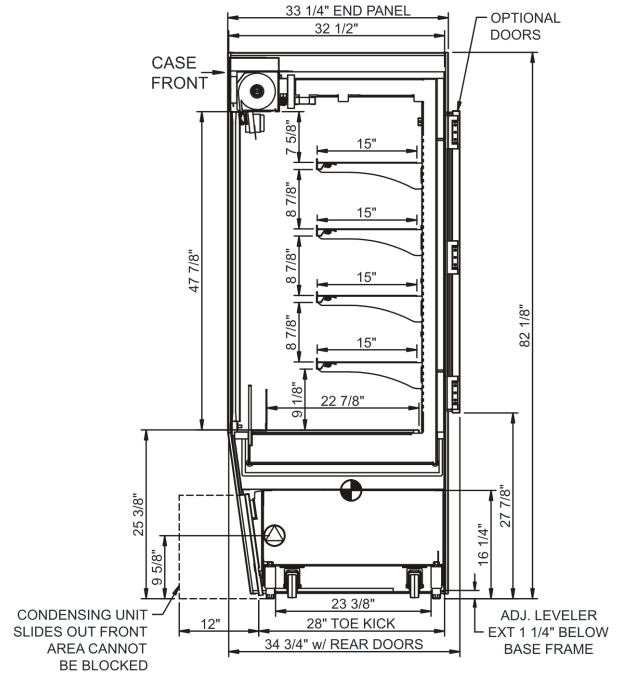
Option Notes: 1 - HECO37R - Specify service LH or RH hinge

Intended Environment: Type II - Designed to operate in ambient conditions of 80°F and 60% relative humidity unless noted otherwise in system information below.		
Zone	Intended Product To Be Displayed	Warmest Avg Prod Temp ° F
1	Packaged refrigerated products	40

PLAN VIEW



SIDE VIEW



NOTE: ALL DIMENSIONS APPROXIMATE

- ELECTRICAL JUNCTION BOX (SUPPLIED WITH 6" LEADS OR POWER CORD).
- LOCATION OF DRAIN TUBE FOR REMOTE REF. ONLY (SUPPLIED WITH 3/4" OR 1 1/2" PVC TUBE).

- REFRIGERATION LINE CONNECTION.
- REMOTE FLOOR SINK & UTILITIES ACCESS AREA.

- SELF-CONTAINED CASE SERVICE ACCESS AREA.
- DRY CASE SERVICE ACCESS AREA.

Model Technical Specifications																
Model	L"	L1"	L2"	System Circuit Volts		Phs	Freq	Amps ***	Watts	Wires	NEMA Plug	SST	Conv. Rack BTUH	Para. Rack BTUH	Est Wt	
HECO37R	34.00	36.50	3.13	Self-Contained (R449A)	Circuit #1	110-120	1	60	16.00	1,616	2+G	5-20P or L5-20P	N/A	N/A	N/A	900
HECO47R	45.00	47.50	3.13	Self-Contained (R449A)	Circuit #1	208-240	1	60	10.80	2,025	2+G	6-20P or L6-20P	N/A	N/A	N/A	1,000
HECO57R	57.00	59.50	3.13	Self-Contained (R449A)	Circuit #1	208-240	1	60	15.31	2,796	2+G	6-20P or L6-20P	N/A	N/A	N/A	1,100
HECO67R	69.00	71.50	3.13	Self-Contained (R449A)	Circuit #1	208-240	1	60	15.65	2,812	2+G	6-20P or L6-20P	N/A	N/A	N/A	1,200

*** Does not include electric defrost on freezer models.

Regulatory Approvals:

All Models
 Accordance with AHRI Std 1200
 ETL Listed to UL 471
 ETL Listed to CAN/CSA 22.2 No. 120
 ETL Sanitation to NSF/ANSI 7



Important Notes:

- 1) ELECTRICAL NOTE: If GFCI is required, a GFCI breaker MUST be used in lieu of a GFCI receptacle
- 2) Performance issues (product temperatures, water on floor, etc.) caused by adverse conditions are not covered by warranty.
- 3) Keep unit at least 15' from exterior doors, overhead HVAC vents, or any air curtain disruption.
- 4) End panels must be tightly joined or kept at least 6" away from any structure to prevent condensation.
- 5) Do not expose unit to direct sunlight or any heat source (ovens, fryers, etc.).
- 6) Keep at least 8" of clearance above unit for air discharge (self-contained only).
- 7) Tile floors, low ceilings, or small rooms will increase noise level. Remote refrigeration recommended.

⚠ WARNING: This product can expose you to chemicals, including Urethane (Ethyl Carbamate), which are known to the State of California to cause cancer and birth defects or other reproductive harm. For more information go to www.P65Warnings.ca.gov.